



# PloView Ver.10.1

Copyright Isoplotec.

## - HPGL / Vector / Image Viewer -

It became general for drawing designed by CAD system to be distributed by electronic data of de facto format of HPGL/PDF/TIFF etc., and to be saved. PloView is viewer for viewing drawing which works on Windows PC. If there is PloView, many people can take part in the planning in instant, such as checking drawing and distributing drawing to section of buy, manufacture, and maintenance. And, since PloView has highly efficient drawing edit function like 2D-CAD, it diverts design drawing and can create drawing of another use easily.

### \* Outline

(1) Support many file formats

Input: HPGL, HP-GL/2, HP RTL, PDF, DXF, DWG, GERBER, NC-Drill, IGES, SXF, EMF, TIFF, JPEG, Bitmap, PCX, FDX, GIF, PNG

Output: PDF, HPGL, HP-GL/2, HP RTL, EMF, TIFF, DXF, DWG, JPEG, Bitmap, IGES, SXF, PCX, FDX, GIF, PNG, Printer, Plotter, Clipboard

\*At PDF output, add layer attribute to color / page, annotate to cloud mark

(2) Open multiple files, display page, and combine into a multi-page file.

Split a multi-page file into separate files for each page.

(3) Color and width change of line, "black and white" / "color" change, background color change, pen ON/OFF

(4) Display mode (Copy/Merge/Xor/data) change

(5) Rotation, mirror, grid displaying

(6) Vector font / TrueType font change of text font

(7) Measurement function of coordinates, length, area, line width, and angle

(8) Connected line search, the total line length measurement

(9) Drawing edit of comment

File: New or vector input file of (1) is read (page number links to layer number), edited, and saving enables to output file of (1).

Figure: Polyline, Arc, Circle, Horizontal line, Vertical line, Slanting line, Opposite side angle line, Regular polygon, Ellipse, Offset line, Free curve, Cloud shape line, Spline, Surface, Rectangle, Long circle, Text, Bitmap, Macro, Dimension (Horizontal, Vertical, Parallel, Angle, Radius, Diameter)

Edit: Setup, Select (individual selecting, rectangular area selecting, polygon area selecting), Move copy, Delete, Divide/Delete/Move/RouteChange polyline section, Delete line in selected area boundary, Trim, Change property, Change vertex R, Chamfer, Connect Line, Rotate copy, Scale Up/Down copy, Macro-izing, Macro breakup, ReDo, UnDo

### \* Operation conditions

The personal computer of Intel compatible CPU

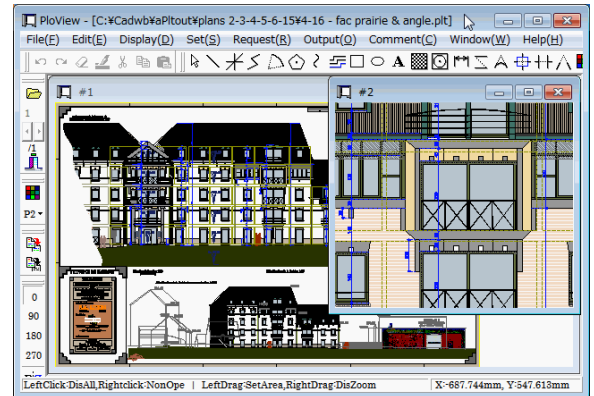
Memory: 1GB or more, Empty capacity of hard disk drive: 100MB or more

Screen resolution: 1024 dots x 768 dots above

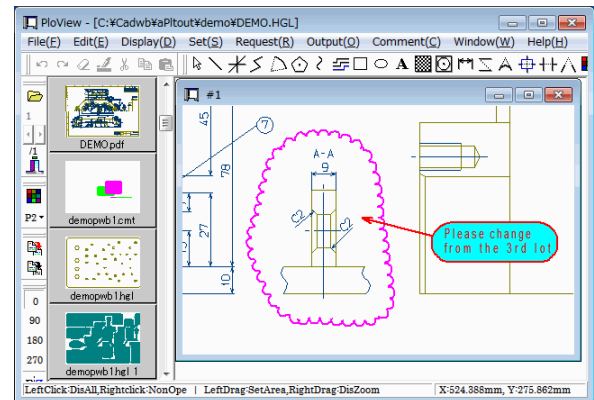
OS: Windows XP, Vista, 7, 8, 10 32 Bit, 64 Bit (except XP)

\* **Charge of a license** 70.00 US\$ / license

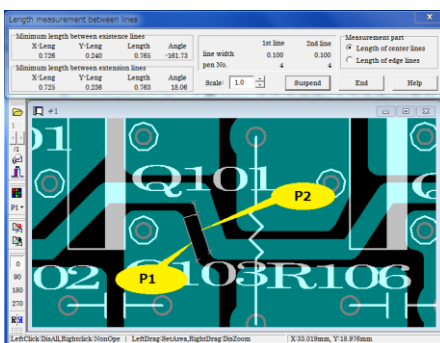
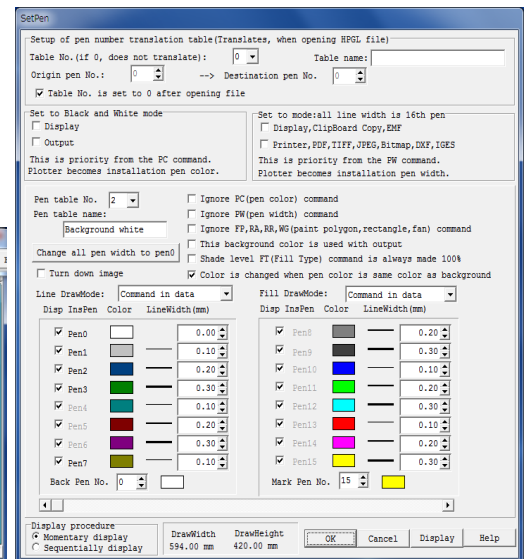
All functions can be tried gratuitously for 30 days.



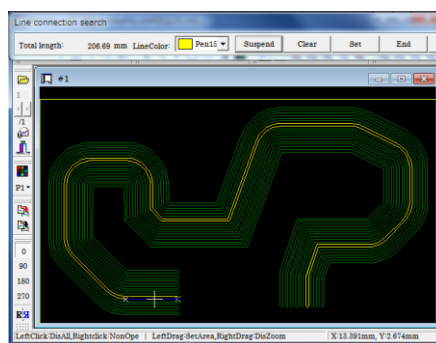
PloView screen



Thumbnail displaying, comment input



Request distance between lines



Search connected lines

Set pen

**Isoplotec Corporation**  
HP: <https://www.isoplotec.co.jp/ehp.htm>

Office Location: 5-9-68-513 Koremasa Fuchu Tokyo Japan  
Phone: 042-306-9266 Fax: 020-4669-6296  
E-Mail: [isoplotec@isoplotec.co.jp](mailto:isoplotec@isoplotec.co.jp)