



# PloCon Ver.10.1

Copyright Isoplotec.

## - HPGL / Vector / Image PrinterOut -

It became general for drawing designed by CAD system to be distributed by electronic data of de facto format of HPGL/PDF/TIFF etc., and to be saved. PloCon is application which works on Windows personal computer.

PloCon reads HPGL/Vector/Image file continuously and outputs it to Windows printer. If there is PloCon, even if there is no expensive plotter, it can output to Windows printer efficiently in large quantities.

### \* Outline

There are following functions. It does not display.

- (1) Paper and output scale
  - Specify fixed form paper, and carry out automatic scaling so that paper size may be matched.
  - Specify fixed form paper and output with designation scale.
  - Select fixed form paper automatically with designation scale.

It is automatic selection about fixed form paper and direction of the optimal printer matched with drawing size which applied scale to drawing area.
- (2) Output from interactive output and other applications.
- (3) Color and width change of line, whole drawing black and white / color change, background color change, pen ON/OFF
- (4) Vector font / TrueType font change of character font
- (5) Multi-page correspondence
- (6) Support to many input file formats

HPGL,HP-GL/2,HP RTL,PDF,DXF,DWG,GERBER,NC-Drill,IGES,SXF,EMF,TIFF,JPEG,Bitmap,PCX,FPX,GIF,PNG

(7) Output mode

### Mode1: Automatic output mode

It will output, if specified output folder is supervised and HPGL/Vector/Image file enters in output folder, and HPGL/Vector/Image file after output is deleted automatically. When there is no drawing file, it waits until file comes.

### Mode2: Continuation output mode

The plural HPGL/Vector/Image files where it is entered into the output listing file where you designated is output continuously.

### Mode3: Step output mode

Wait for the next output instructions, after plural HPGL/Vector/Image files where it is entered into the output listing file where designated is output 1 file.

### \* Operation conditions

The personal computer of Intel compatible CPU

Memory: 1GB or more

Empty capacity of hard disk drive: 100MB or more

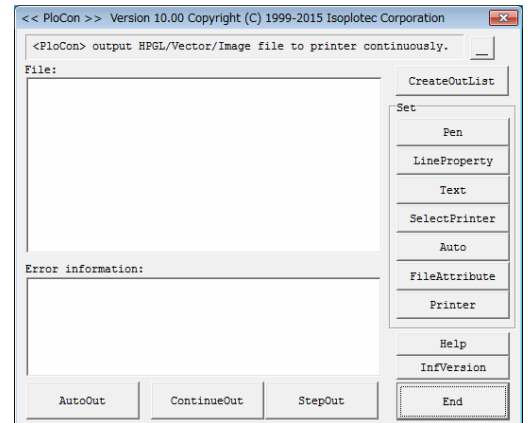
Screen resolution: 1024 dots x 768 dots Above

32Bit OS: Windows XP, Vista, 7, 8, 10

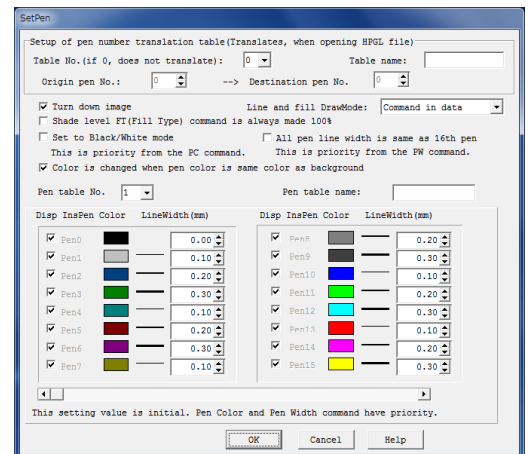
64Bit OS: Windows Vista, 7, 8, 10

### \* Charge of a license 70US\$ / license

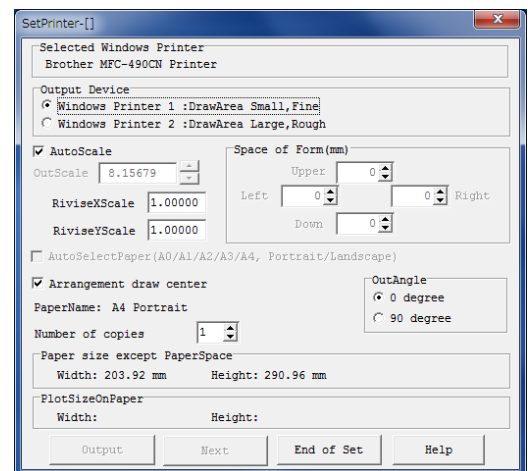
All functions can be tried gratuitously for 30 days.



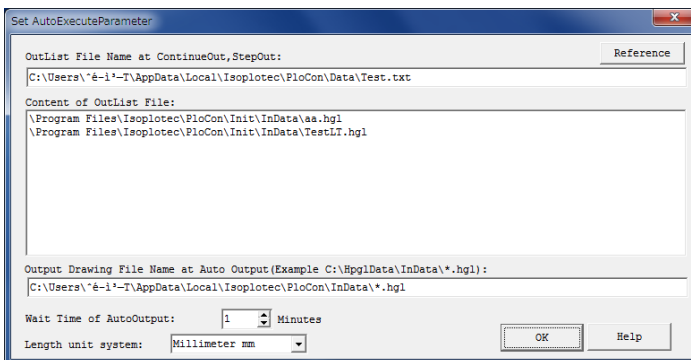
PloCon screen



Set pen



Set plotter



Set output parameter

**Isoplotec Corporation**

HP: <https://www.isoplotec.co.jp/ehp.htm>

Office Location: 5-9-68-513 Koremasa Fuchu Tokyo Japan  
Phone: 042-306-9266 Fax: 020-4669-6296  
E-Mail: [isoplotec@isoplotec.co.jp](mailto:isoplotec@isoplotec.co.jp)