



# PloCompAuto Ver.12.0

Copyright Isoplotec.

## - HPGL / Vector / Image Converter -

PloCompAuto superimposes multiple drawing files such as printed boards into a single drawing and automatically converts them to PDF, TIFF, etc. at high speed. Also, the drawing area of two drawing files is compared and the change area is automatically and continuously obtained. PloCompAuto will be a very useful tool for electronic library, PDM system construction or design change management.

### ●Outline

#### ▪ Output 1

Input:HPGL, HP-GL/2, HP RTL, PDF, DXF, DWG, GERBER, NC-drill, IGES, SXF, TIFF, JPEG, Bitmap, PCX, FPX, PNG, GIF, EMF, CMT

Output:PDF, TIFF, DXF, DWG, JPEG, BITMAP, IGES, SXF, EMF, XPS, PCL, WMF,PS, EPS, SVG, GIF, PNG, PCX, FPX, CMT,

HPGL/Printer, PloComp screen

Compare the drawings of the two input files, add the changed area, and output.

#### ▪ Output 2

Input: PDF

Output: WMF, EMF, PS, EPS, SVG, XPS, HPGL, PCL

### ●Output mode

#### (1) Standby output mode

The specified folder is monitored and output when an input file arrives. The input file is automatically deleted after output. If there is no input file, wait until the file arrives. It also supports drawing comparison. When an input file is received, (3) Drawing comparison between folders is started.

#### (2) Batch file output mode

Multiple input files listed in the specified output list file are output continuously. Also supports drawing comparison. You can open multiple input files at the same time. When the output is on screen, start PloComp and display it on the screen. When you exit PloComp, PloComp starts again and displays the following screen.

#### (3) Inter-folder drawing comparison

The input files with the same file names in the two specified folders are continuously compared, and the changed area is added and output.

PloCompAuto is a set with automatic output special specification version PloComp (hereinafter referred to as PloComp). PloCompAuto generates a command line to start PloComp and has a function to start PloComp. You can also start and convert PloComp from your application.

PloComp HPGL input, PDF output command line example:

PloComp.exe /p ab1.hgl /oab.pdf

### ●Operating conditions

Personal computer with Intel compatible CPU

Memory: 1GB or more

Free hard disk space: 100MB or more

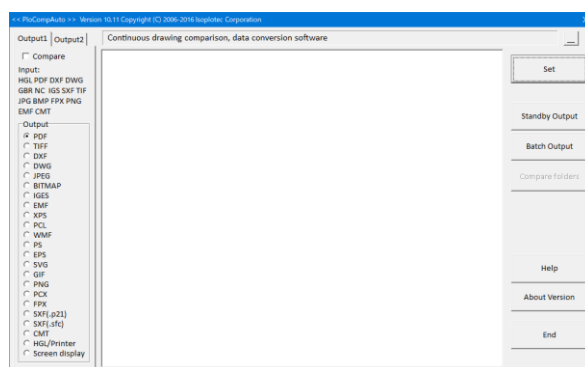
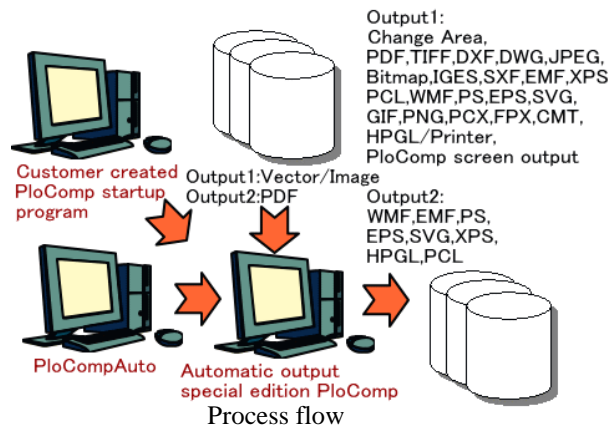
Screen resolution: 1024 dots x 768 dots or more

OS: Windows 7, 8, 10, 11 32 bits, 64 bits

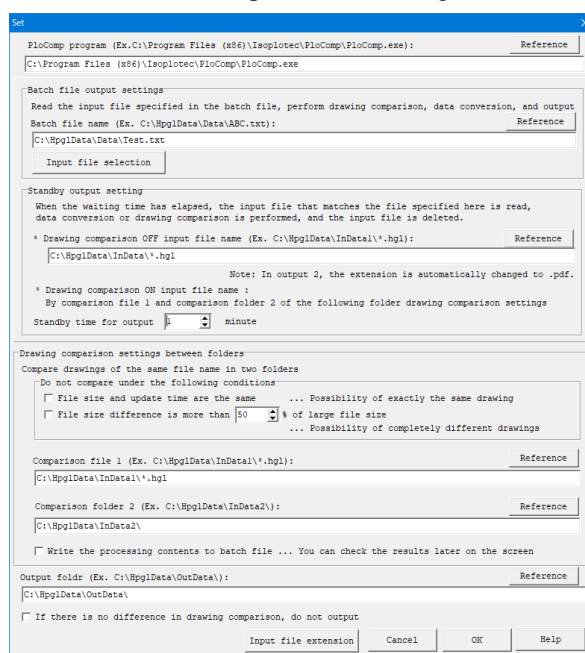
### ●License fee

950 US\$ / license

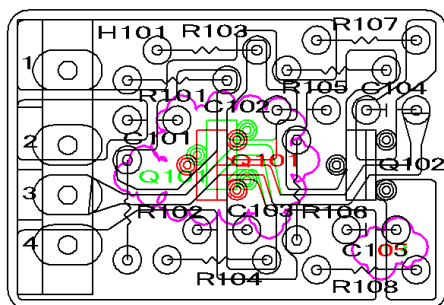
You can try all functions free of charge for 30 days.



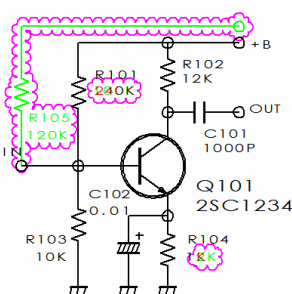
PloCompAuto main dialog



PloCompAuto setting dialog



PloCompAuto drawing comparison



**Isoplotec Corporation**

<https://www.isoplotec.co.jp/>

Office Location : 5-9-68-513 Koremasa Fucyu Tokyo Japan  
 Phone: 042-306-9266 (Only Japanese)  
 E-Mail: [isoplotec@isoplotec.co.jp](mailto:isoplotec@isoplotec.co.jp)  
 Please send order and inquiry by E-Mail.