



# PloViewAuto Ver.11.0

Copyright Isoplotec.

## - HPGL / Vector / Image Converter -

PloViewAuto reads a lot of HPGL/Vector/Image files continuously, and converts it into format files often used, such as PDF, TIFF, DXF, and IGES, at high speed automatically. PloViewAuto will serve as tool greatly effective in systems configurations, such as electronic drawing warehouse and PDM.

### \* Outline

This program carries out continuation conversion of the file of format shown below.

#### - Output 1

Input:HPGL,HP-GL/2,HP RTL,PDF,DXF,DWG,GERBER,NC-Drill,IGES,SXF,EMF,TIFF,JPEG,Bitmap,PCX,FPX,GIF,PNG

Output:PDF,HP-GL/2,EMF,TIFF,DXF,DWG,JPEG,Bitmap,IGES,SXF,PCX,FPX,GIF,PNG,CMT,HPGL/Printer

#### - Output 2

Input :PDF

Output:WMF,EMF,PS, EPS, SVG, XPS, HPGL, PCL

Output mode has the two following modes.

#### (1) Standby output mode

The same input file as specified input file name with wild card is looked for, if it is, it will output, and input file is automatically deleted after output.

When there is no input file , it waits until file comes.

#### (2) Batch Output mode

Plural input files described in specified output list file are outputted continuously.

This program is the automatic output special edition version PloView (it is called Following PloView) and set. This program generates command line which starts the automatic output special edition version PloView, and has function to start PloView.

Example of PDF output command line of PloView :

PloView.exe /p abc.hgl abc.pdf

If you use wildcards as input filenames, PloView reads multiple files.

PloView.exe /p ab\*.hgl ab.pdf

### \* Operation conditions

The personal computer of Intel compatible CPU

Memory: 1GB or more

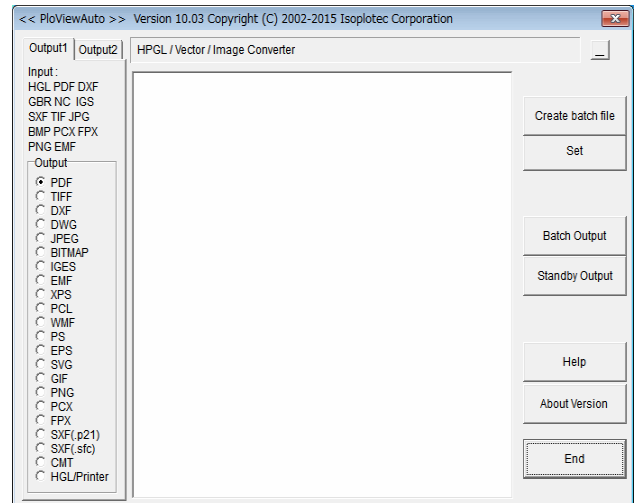
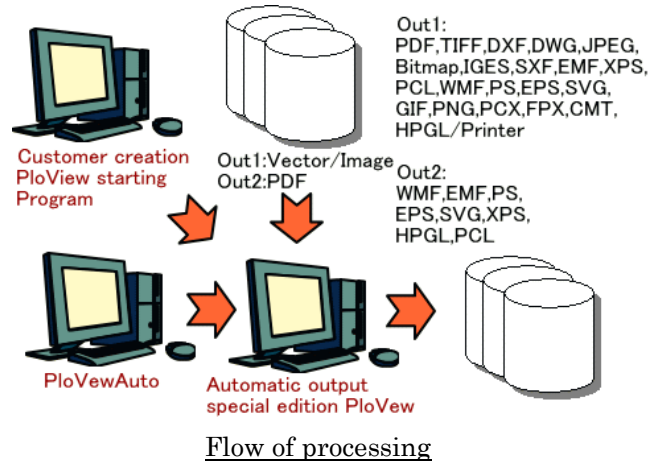
Empty capacity of hard disk drive: 100MB or more

Screen resolution: 1024 dots x 768 dots Above

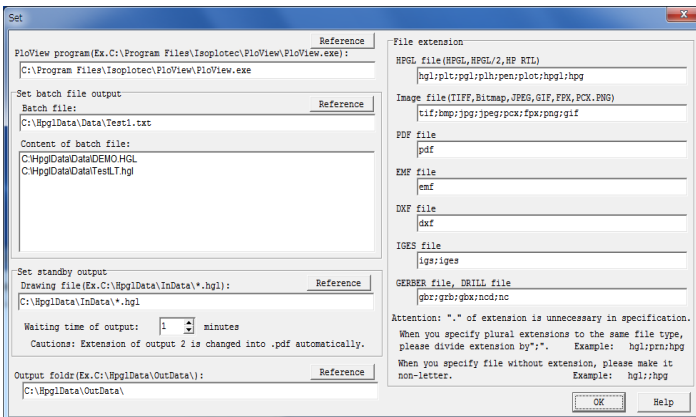
OS: Windows 7, 8, 10, 11 32Bit, 64Bit

### \* Charge of a license 950 US\$ / license

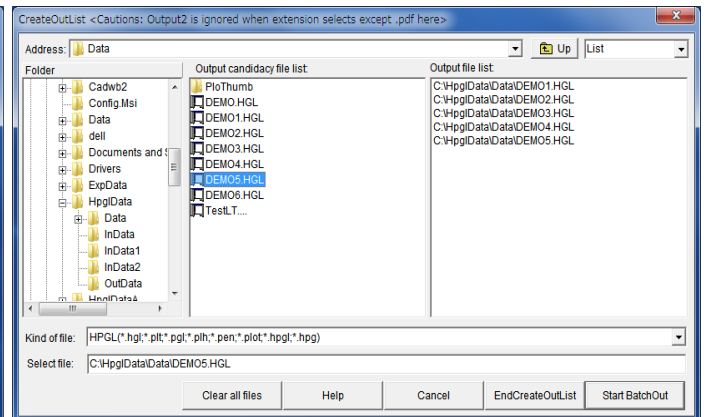
All functions can be tried gratuitously for 30 days.



PloViewAuto main dialog



PloViewAuto set dialog



PloViewAuto batch file creation dialog

Isoplotec Corporation

<https://www.isoplotec.co.jp/>

Office Location : 5-9-68-513 Koremasa Fucyu Tokyo Japan  
Phone: 042-306-9266 (Only Japanese)  
E-Mail: isoplotec@isoplotec.co.jp  
Please send order and inquiry by E-Mail.