



# PloComp Ver.11.0 Copyright Isoplotec.

## -HPGL / Vector / Image Viewer -

It became general for drawing designed by CAD system to be distributed by electronic data of de facto format of HPGL/PDF/TIFF etc., and to be saved. PloComp is viewer for viewing drawing which works on Windows PC. PloComp reads plural HPGL/Vector/Image files and PloComp piles up or arranges drawing, and displays it. And, since PloComp has highly efficient drawing edit function like 2D-CAD, it diverts design drawing and can create drawing of another use easily.

### \* Outline

(1) Support many file formats

Input: HPGL, HP-GL/2, HP RTL, PDF, DXF, DWG, GERBER, NC-Drill, IGES, SXF, EMF, TIFF, JPEG, Bitmap, PCX, FPX, GIF, PNG

Output: PDF, HPGL, HP-GL/2, HP RTL, EMF, TIFF, DXF, DWG, JPEG, Bitmap, IGES, SXF, PCX, FPX, GIF, PNG, Printer, Plotter

(2) High-speed display of vector drawing, and many commands about display

(3) Display a maximum of 20 plural drawings in piles, or arrange and display.

Displaying ON/OFF of the piled-up drawing is carried out per drawing.

(4) Compare two drawings and add cloud mark automatic to change area

(5) Color and width change of line, whole drawing black and white / color change, background color change, pen ON/OFF

(6) Display mode: Copy / Merge / Xor / Command in data

(7) Rotation, mirror, thumbnail displaying

(8) Vector font / TrueType font change of character font

(9) Measurement function of coordinates, length, area, line width, and angle

(10) Connected line search, the total line length measurement

(11) Drawing edit of comment

File: New or vector input file of (1) is read (page number links to layer number), edited, and saving enables to output file of (1).

Figure: Polyline, Arc, Circle, Horizontal line, Vertical line, Slanting line, Opposite side angle line, Regular polygon, Ellipse, Offset line, Free curve, Cloud shape line, Spline, Surface, Rectangle, Long circle, Text, Bitmap, Macro, Dimension (Horizontal, Vertical, Parallel, Angle, Radius, Diameter)

Edit: Setup, Select (individual selecting, rectangular area selecting, polygon area selecting), Move copy, Delete, Divide/Delete/Move/RouteChange polyline section, Delete line in selected area boundary, Trim, Change property, Change vertex R, Chamfer, Connect Line, Rotate copy, Scale Up/Down copy, Macro-izing, Macro breakup, ReDo, UnDo

### \* Operation conditions

The personal computer of Intel compatible CPU

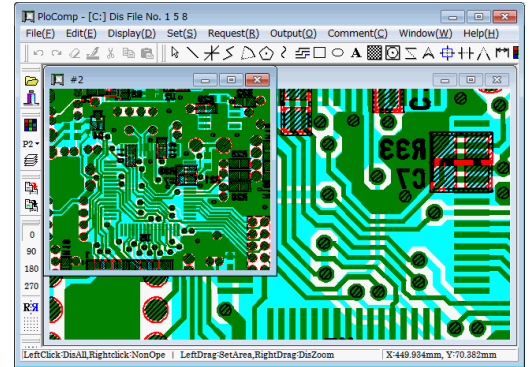
Memory: 1GB or more, Empty capacity of hard disk drive: 100MB or more

Screen resolution: 1024 dots x 768 dots Above

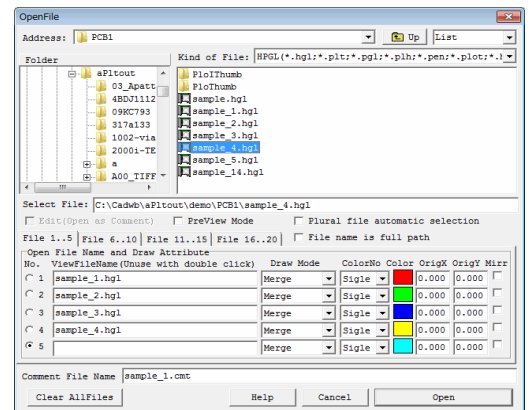
OS: Windows 7, 8, 10, 11 32Bit, 64Bit

\* **Charge of a license** 90US\$ / license

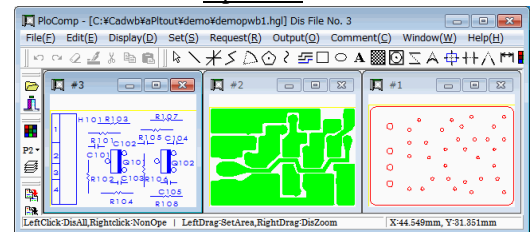
All functions can be tried gratuitously for 30 days.



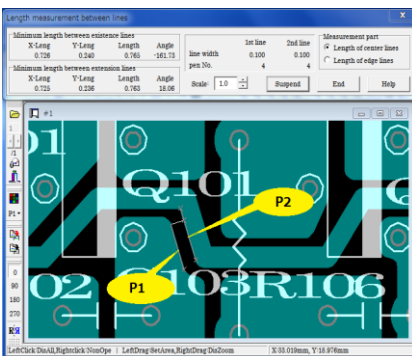
PloComp screen



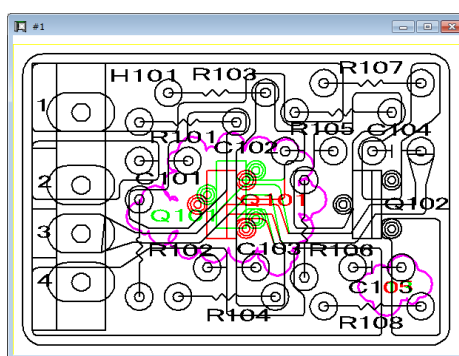
Open file



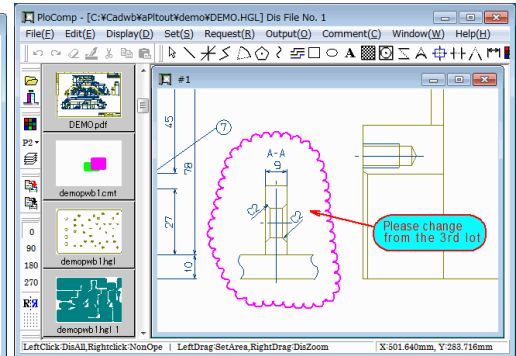
Display in arranges



Request distance between lines



Drawing comparison



Thumbnail displaying, comment input

**Isoplotec Corporation**

<https://www.isoplotec.co.jp/>

Office Location : 5-9-68-513 Koremasa Fucyu Tokyo Japan

Phone: 042-306-9266 (Only Japanese)

E-Mail: [isoplotec@isoplotec.co.jp](mailto:isoplotec@isoplotec.co.jp)

Please send order and inquiry by E-Mail.